

PRODUCT

6M Raptor



Upholstery fabric category	bouclé
Material	63 % acrylic 21 % polyester (PES) 16 % polypropylen (PP)
Care labelling	



CTL® GmbH

QUALITY FEATURES

The product complies with quality requirements according to DIN EN 14465:2006



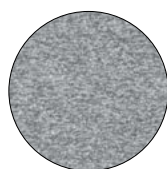
Abrasion resistance EN ISO 12947-1 & 2	>30,000 cycles
Pilling EN ISO 12945-2 – 2000 cycles.	5
Light fastness EN ISO 105-B02 – method 2	4-5
Colour fastness to rubbing EN ISO 105-X12	4-5
Cigarette test DIN EN 1021-1	passed
MAK amines, azo dyes EN 14362-1 & 3	not detectable
Allergenic & carcinogenic dispersion dyes DIN 54231	not detectable

Other test results are available on request from designwerk.

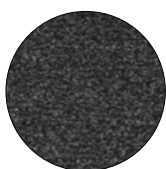
PROPERTIES OF THE COVER FABRIC

Light colours show soiling and denim abrasion faster and more clearly than dark colours. With light colours, colour migration can occur in combination with dark or intensive colours. Dark and intense colours tend to rub off. Pilling is unavoidable and can also be caused by the adhesion of foreign fibres. A slight streaking effect may occur due to the material. Slight variations in colour and texture between production batches are unavoidable and may occur. A certain amount of colour fading due to exposure to light or abrasion caused by wear and tear is inherent in the nature of a fabric. Every velour fabric will flatten with use, so pile layer changes/seat reflections are unavoidable. Changing colours depending on the incidence of light is in the nature of velour. Velour fabrics tend to be sensitive to scratching and pressure, which can result in pile loss.

Attention: Colour-contrasting seam only for approved models.



Silver G126



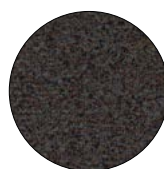
Charcoal G127



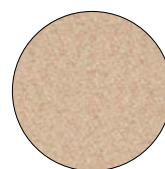
Turtle G128



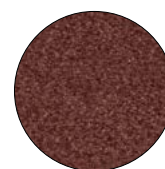
Aubergine G129



Peacock G130



Cameo G131



Brick G132



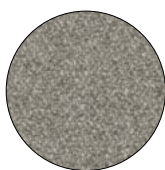
Jungle G133



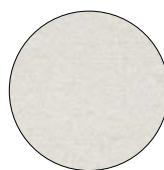
Pinecone G134



Chinchilla G135



Oyster G136



Ivory G137

Please note that the illustrated colours may deviate from the original colours..
designwerk ag • info@designwerk.li • www.designwerk.li



STANDARD 100 ZH015 187350 TESTEX
www.oeko-tex.com