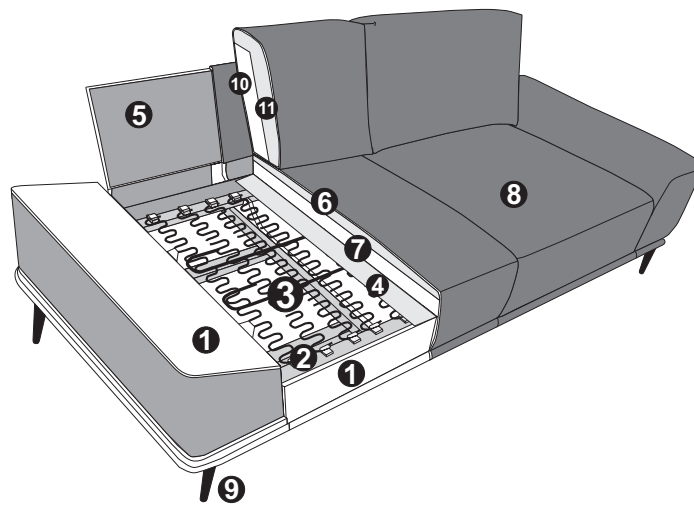


PURCHASE PRICE AND TYPE LIST

Information Oslo

When elegance, comfort and luxury take shape, you have Oslo. A state-of-the-art sofa with the highest level of quality. Oslo is the elegant and timeless centre in every stylish living room. With its purist lightness and high level of aesthetics, Oslo, despite its cubist design language, stands for timeless comfort and cosy warmth. The top-quality cover materials feature traditional sewing, which underlines the elegant nature of this stylish design highlight. Oslo is the classy seduction of serenity.



PRODUCT AND ORDER INFORMATION

- 1 Frame: **Beech wooden construction**
- 2 Supporting spring system seat: **permanently elastic NOSAG steel wave springs with felt cover**
- 3 Upholstery structure seat: **highly elastic CFC-free cold cure foam (density 35 kg/m³) with top-quality visco foam pad (density 45 kg/m³)**
- 4 Supporting spring system back: **flexible upholstery straps**
- 5 Upholstery structure back: **loose cushions with filling made of CFC-free foam material and foam sticks**
- 6 Foot: **metal foot / height: 17 cm**

GOOD TO KNOW

Cover: **Single-colour fabric and leather with contrasting seam**

Please note: The contrasting seam colour depends on the choice of cover and cannot be chosen freely. The specified contrasting seam colour is sewn on each fabric/leather sample.

Accessories (optional): **Kidney cushions, throw cushions**

Metal foot available in:



B
mat black



C
chrome



G
gold

PURCHASE PRICE AND TYPE LIST

Specifics Oslo

UPHOLSTERY STRUCTURE

The seat of this model is padded with a combination of top-quality CFC-free cold cure foams with at least 35 kg/m³ density and an extremely comfortable and durable visco foam pad with 45 kg/m³ density. To achieve optimal sitting comfort, we use highly elastic foam material and soft foam sticks in the back of this model.

WAVE FORMATION

Forming waves is a typical feature of this model. This is caused by the different qualities of the cover materials and the way in which fabric and leather respond to the impacts of everyday life. Body heat, weight and humidity have different effects on the materials, which is why the wave formation is a natural response of more casual models.

COVERED BACK SECTIONS

The elements are always covered in the same fabric in the back and thus offer many possibilities to position the model.

LEATHER AND FABRIC PROCESSING

Due to the different qualities of the fabrics, it is possible that the decorative, double and fell seams either vary or are left out altogether. This depends, among other things, on the fabric width, which can render the parting of the back unnecessary and allow a simple seam to replace the decorative seam.

CONTRASTING SEAM

The Oslo model showcases its distinctive craftsmanship with stitching that contrasts with the colour of the upholstery. The colour of the contrasting thread is always tailored to the respective leather or fabric upholstery. You can find some examples of this on the next page.

COLOUR DEVIATIONS

Please note that natural materials such as leather and wood are as individual in their structure and colour as nature itself. We make every effort to provide you with an item that is as close as possible to the colour sample. However, please excuse that the colour of delivered items may vary, which does not constitute a defect.

RESERVATION

We reserve the right to improve products and their quality if technological progress so demands or if this contributes to maintain delivery capacity. The same applies to the correction of faulty details.

FSC®

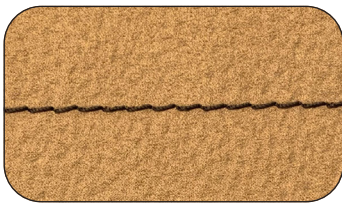
Since September 2022 all our sofas and armchairs are FSC® certified (FSC®-C112933). FSC® stands for 'Forest Stewardship Council®', which is an international certification system for more sustainable forest management. Products that are certified to carry this label are exclusively made from sustainable wood.



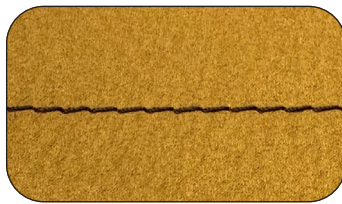
Specifics Oslo

CONTRAST STITCHING

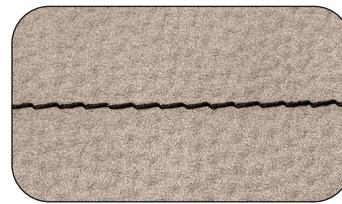
As you may imagine when you hear the term “contrast stitching”, a dark thread is used on lighter leather and fabric upholstery, whereas a lighter thread is used on darker leather and fabric upholstery. You can find some examples of this enclosed:



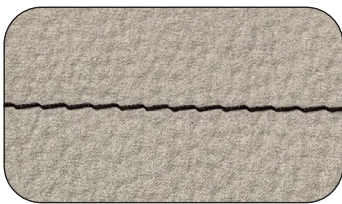
Contrast stitching: Brown



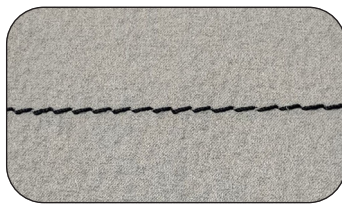
Contrast stitching: Brown



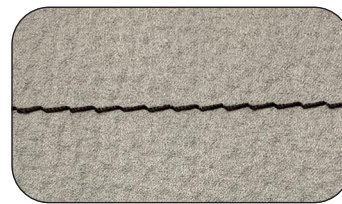
Contrast stitching: Black



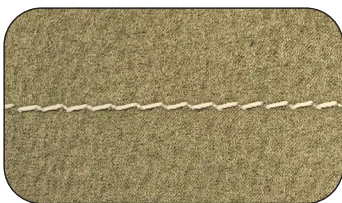
Contrast stitching: Black



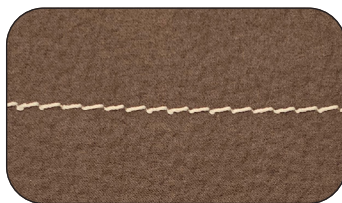
Contrast stitching: Black



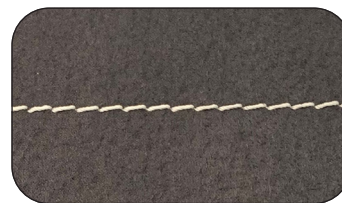
Contrast stitching: Black



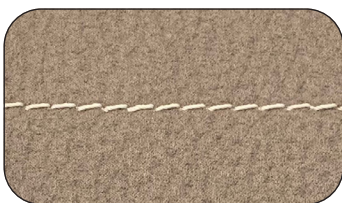
Contrast stitching: Beige



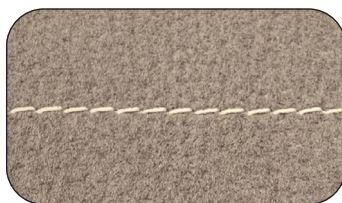
Contrast stitching: Beige



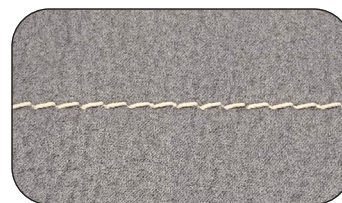
Contrast stitching: Beige



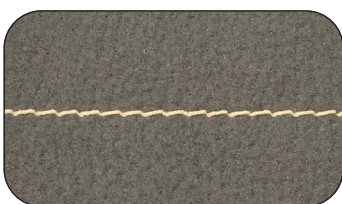
Contrast stitching: Beige



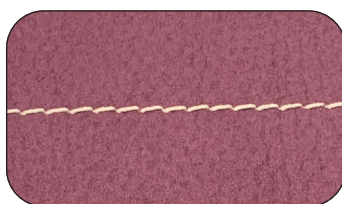
Contrast stitching: Beige



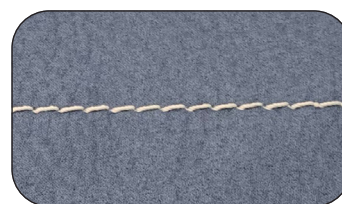
Contrast stitching: Beige



Contrast stitching: Beige



Contrast stitching: Beige



Contrast stitching: Beige